

FOREX STF ROBOT

INSTALLING YOUR ROBOT

The robot works on Metatrader platform, if you don't have it installed already then please open a demo account with any broker that supports Metatrader. Download and install Metatrader then continue the installation process of your EA. Read the other file from the members area on more instructions on how to do that.

After installing Metatrader:

Copy the indicator (Forex-STF.ex4) to : Windows/Program files/Metatrader/Experts.

Restart Metatrader

Open **EUR/USD chart – 1 M** (1 minute) Time frame.

Under "Navigator" window, double click on "Expert Advisors" and then double click on "Forex-STF" icon.

There are many free resources online that you can also use to further your knowledge of forex trading, if you desire to. And you can contact Metatrader's support if you experience any problems when you use it for the first time.

You can use the EA with 4 – 5 digits brokers, ECN brokers and works with new NFA rules (no hedging).

Also, the currency pair's symbols must be normal. For example: EUR/USD. And not something like EURxyz/USDxyz!

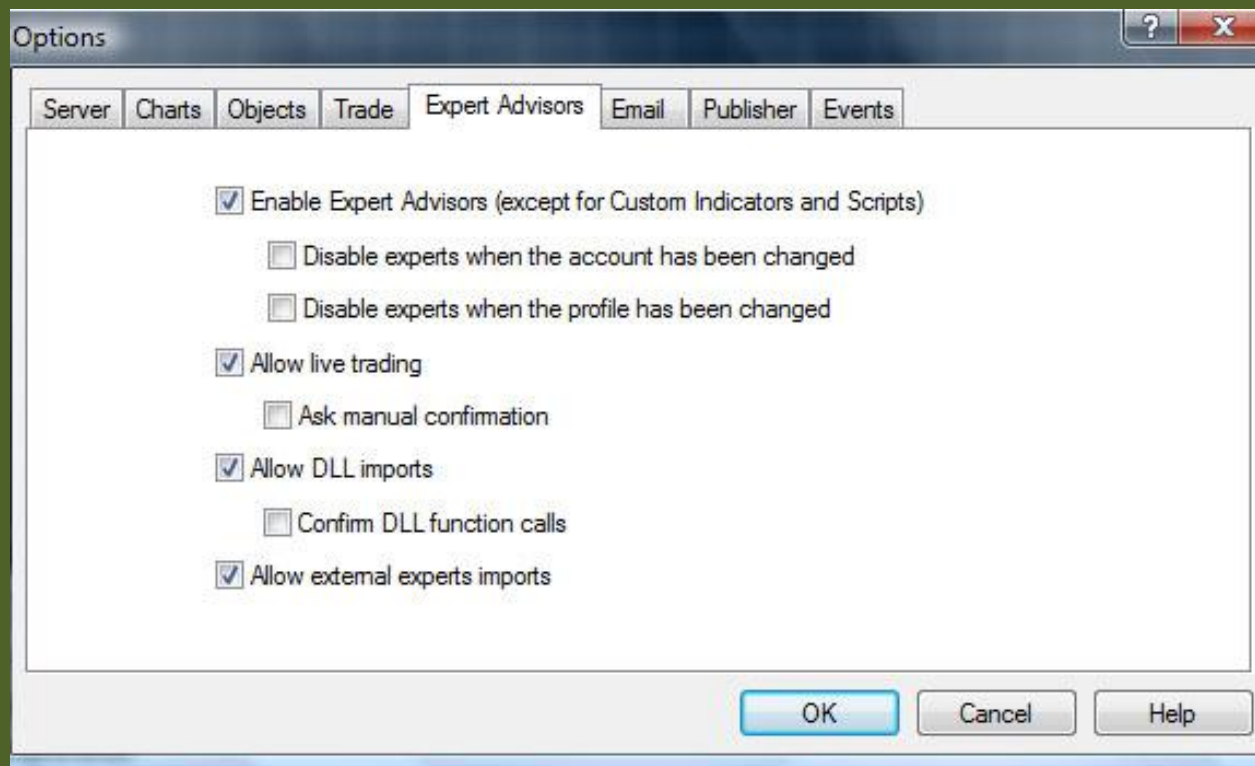
After installing the EA you should see a smiley face on chart .. that means your EA is now working properly.

(If you need to attach the EA to the chart, just click and hold the EA name in the navigator menu and drag it to the chart and release)

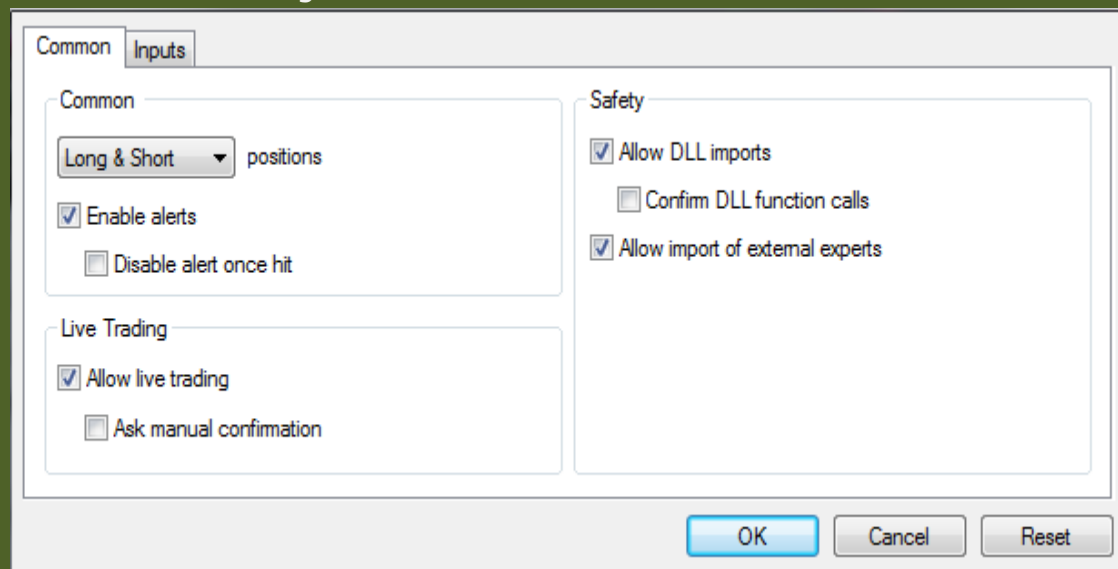
ADJUST SETTINGS

Before you start using the EA, make sure that all settings and parameters are correct.

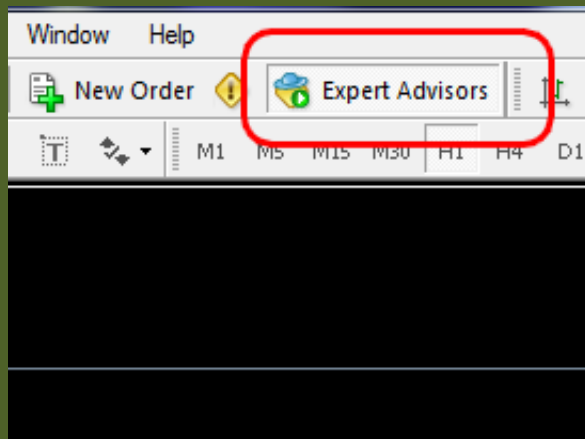
In Metatrader: go to Tools >> Options >> Expert Advisors



2 – in the EA's settings. Go to >> Common



In the main toolbar, click on >> Expert Advisors:



Please copy these settings and use it as your default settings for this EA:

Take Profit:500 (High number to shield it from the broker, part of stealth technology)

Stop Loss:225 (High number to shield it from the broker, part of stealth technology)

UseTrailingStop:True

Trailing Stop:25

Lots: (Used if auto money management is not active) default is 1 lot size

MM: (auto money management) default is "True"

Risk: (Risk % to use if auto management is active – use format: 0.XX – for example, 0.15 = 15% risk) Default is 3

Slippage: difference between order price and current price, default is 3

SignalMail: if set to True, the EA will send opened orders to your email. You need to adjust Metatrader's settings for this option to work. Please contact their support for more information.

EachTickMode: set to True, if you are in backtest mode

MagicNumber: EA's ID or special number – use any random number

