

FOREX STF Robot
FOREX STF Robot
ADVANCED

INSTALLING YOUR ROBOT

The robot works on Metatrader platform, if you don't have it installed already then please open a demo account with any broker that supports Metatrader. Download and install Metatrader then continue the installation process of your EA. Make sure to read the broker installation file in the members area.

After installing Metatrader:

Copy the indicator (Forex-STF-Adv.ex4) to : Windows/Program files/Metatrader/Experts.

Restart Metatrader

Open **EUR/USD chart – 1 M** (1 minute) Time frame.

Under "Navigator" window, double click on "Expert Advisors" and then double click on "Forex-STF-Adv" icon.

(If you need to attach the EA to the chart, just click and hold the EA name in the navigator menu and drag it to the chart and release)

There are many free resources online that you can also use to further your knowledge of forex trading, if you desire to. And you can contact Metatrader's support if you experience any problems when you use it for the first time.

You can use the EA with 4 – 5 digits brokers, ECN brokers and works with new NFA rules (no hedging) .

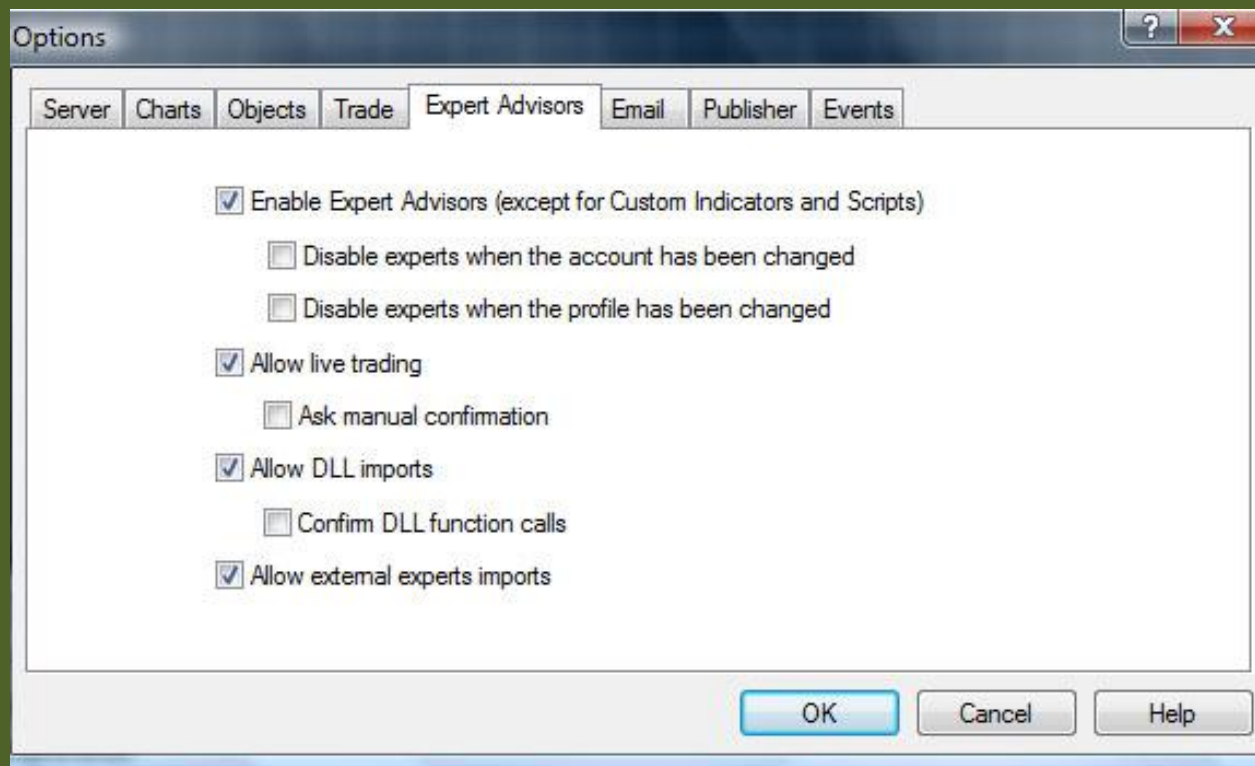
Also, the currency pair's symbols must be normal. For example: EUR/USD. And not something like EURxyz/USDxyz!

After installing the EA you should see a smiley face on chart .. that means your EA is now working properly.

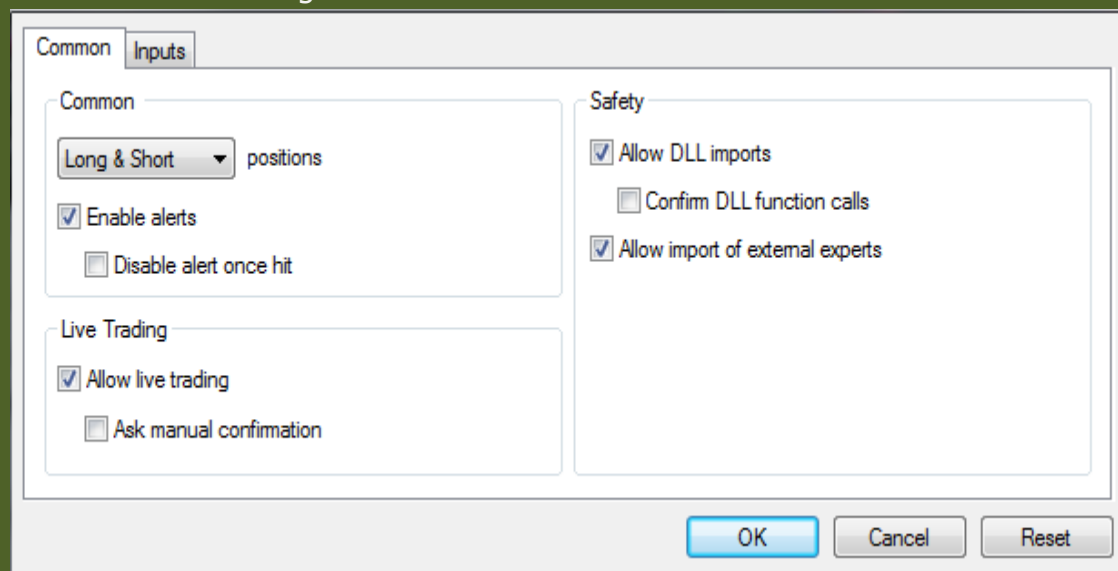
ADJUST SETTINGS

Before you start using the EA, make sure that all settings and parameters are correct.

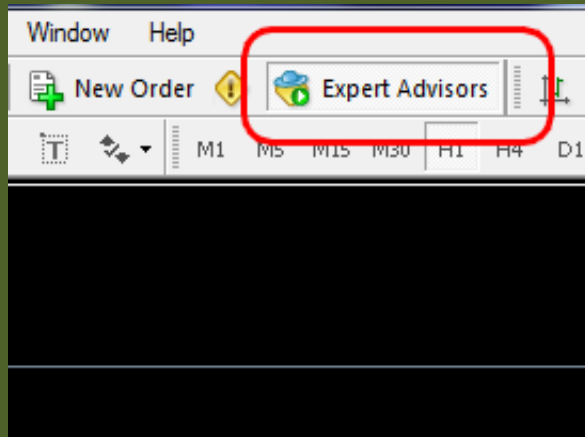
In Metatrader: go to Tools >> Options >> Expert Advisors



2 – in the EA's settings. Go to >> Common



In the main toolbar, click on >> Expert Advisors:



Please copy these settings and use it as your default settings for this EA:

MaxTrades: (maximum trades) default is 2

Take Profit: Default is 10, maximum 25

Stop Loss:225 (High number to shield it from the broker, part of stealth technology)

UseHourTrade: True

FromHourTrade: 8 (GMT + 2)

ToHourTrade:23 (GMT+2)

Lots: (Used if auto money management is not active) default is 1 lot size

MM: (auto money management) default is "True"

AccountIsMicro: True if your account is a micro account

Risk: (Risk % to use if auto management is active – use format: 0.XX – for example, 0.15 = 15% risk) Default is 3

MagicNumber: EA's ID or special number – use any random number

Note: if you don't know your broker's GMT offset, please contact their support or see the image below:

If anyone wants the GMT settings for the brokers they use, it is simple to calculate. Look at the market watch in your platform, lets pretend it says 1800 (assuming your are logged into your demo or live account for the relevent broker) . Then find out the time in London (GMT) lets pretend it is 2000. Then you know that the GMT setting for that broker is GMT +2
GMT OFF-SETS for EA's used in MetaTrader.:

Alpari: GMT +2
CFGTrader: GMT +2
CoesFX: GMT +3
Fibo Group: GMT +2
Forex LTD: GMT +2
FXCM GMT -4
FXDD: GMT +3
IBFX: GMT
Marketiva GMT
MetaQuotes: GMT +2
MoneyTec: GMT +3
Netdania Charts GMT -8
North Finance: GMT +2
Oanda GMT -5
Orion: GMT +4
Real Trade: GMT +2

